



SUZUKA® GROUP

TAIWAN • MALAYSIA • THAILAND

Application Steps

| Process | Material (Mixing Weight Ratio) | Number of Coats | Interval Time Required Between Steps | Consumption (±15%) | Tools of Application |
|-------------------------------|---|--------------------|--|-------------------------|-------------------------------|
| 1. Surface Preparation | Surface needs to be dry and free from dirt, oil, and foreign matter. Surface unevenness, including cracks, will need to be treated with cement filler. | | | | |
| 2. Under Coating | EM Sealer : Water 100 : 0 -10 | 1 | 3 | 0.20ltr/ m ² | Spray Gun, Roller or Brush |
| 3. Texture Coating | SGM Body Coat : Water 100 : 0 -10 | 1 | 24 | 1.2kg/ m ² | Spray Gun |
| | SGM Base Color : Water - : - | 2 | 3 | 0.35ltr/ m ² | Spray Gun, Roller or Brush |
| | SGM : Water 100 : 0 -1 | 1 ~ 2 | 24 | 0.4kg/ m ² | SGM Spray Gun |
| 4. Top Coating | SGM Top Coat : Water - : - | 1 | - | 0.15ltr/ m ² | Spray Gun, Roller or Brush |

Photos of the products are based on the scale 1:3 and may vary in colour due to lighting conditions and printing.
We suggest you examine actual product samples before ordering.



  [suzuka.malaysia](https://www.suzuka.com.my)
HOTLINE 03 3291 0722
[suzuka.com.my](https://www.suzuka.com.my)



SUZUKA® GRANI MULTICOLOR



ABOUT US

Suzuka® Malaysia – belonging to the Suzuka® Group, which holds manufacturing companies in Taiwan, Malaysia and Thailand – is one of Malaysia's leading manufacturers in decorative building materials. Specializing in a wide range of stone veneers, waterproofing materials, and texture coatings, we offer durable and versatile products that are suitable for decorating both interiors and exteriors of homes and commercial buildings.

Not only do our products cater to buildings of various aesthetics and designs, but they also exceed international quality and safety standards. Armed with protection against UV damage, water seepage, dust, dirt and stains, we lower potential maintenance costs in the future. In addition to being an ISO 9001 certified company, we also carry a selection of SIRIM QAS certified products and a range of environmentally-friendly products certified by Singapore Green Label and SIRIM Eco Label.

Within the past decade, we've become an international supplier to number of regions, including Australia, Saudi Arabia, Thailand, Cambodia, Qatar, the United Arab Emirates, Bahrain, Indonesia, Singapore, and West Africa.

To experience why Suzuka® products are trusted around the world, choose from our extensive range of coatings and artificial stone veneers.



SUZUKA® GRANI MULTICOLOR

SGM uses high-performance and environmentally-friendly technology. Its water-based coating packages itself into individual capsules, allowing each to contain its own unique formula and colour. This creates a one-time multi-colour spray system that is not only durable, but also effective in mirroring the authentic granite texture.



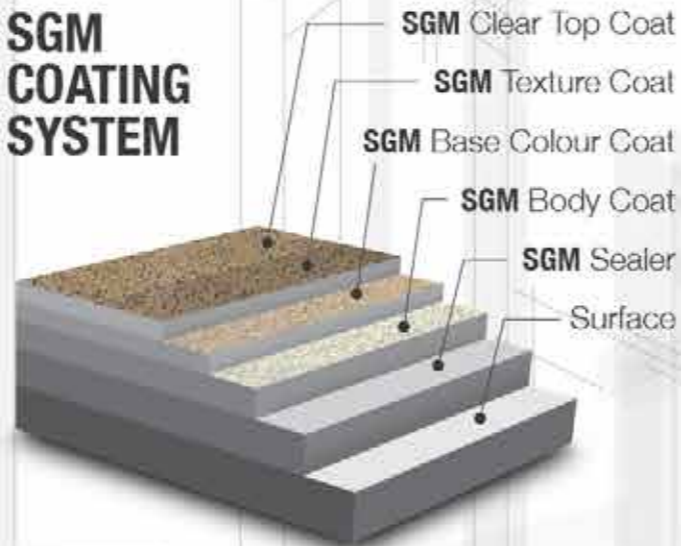
SGM vs. REAL GRANITE

| FACTORS | SGM | REAL GRANITE |
|----------------------------|----------------------------|--|
| Installation Time | Quick | Slow |
| Installation Ease | Simple | Difficult and requires extensive set-up |
| Installation Cost | Economical | Expensive |
| Material Cost | Economical | Expensive |
| Colour Control | Yes | No |
| Environmental-Friendliness | Non-invasive & water-based | Environmentally invasive |
| Safety | No risk | Risk of loosened stones falling |
| Customization | Yes | No |
| Maintenance | Economical and simple | Requires replacement and colour matching |

ADVANTAGES

- One-time, multi-colour spray system
- Colours and patterns can be customized
- Resistant to stains, fungus, algae, acid and alkali
- Washable and easy to maintain
- High adhesion and anti-peeling/flaking
- Superb elasticity and is crack resistant
- Water-based and eco-friendly
- Excellent durability against weather conditions

SGM COATING SYSTEM



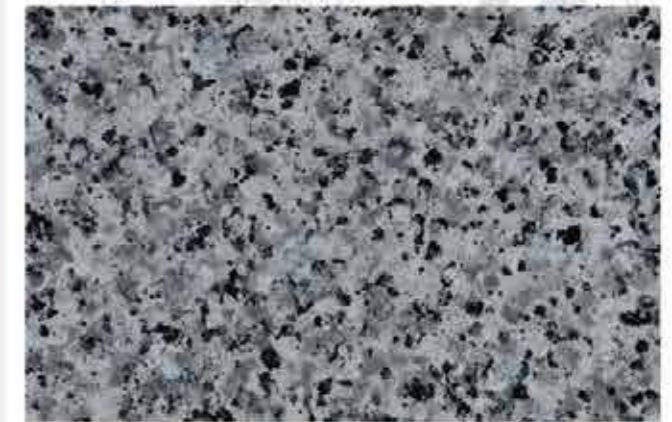
SGM-G-101



SGM-G-102



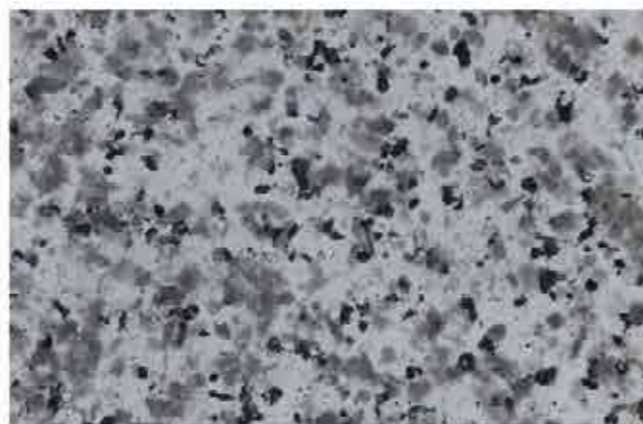
SGM-G-103



SGM-G-104



SGM-G-105



SGM-G-106



SGM-G-113



SGM-G-114



SGM-G-107



SGM-G-108



SGM-G-115



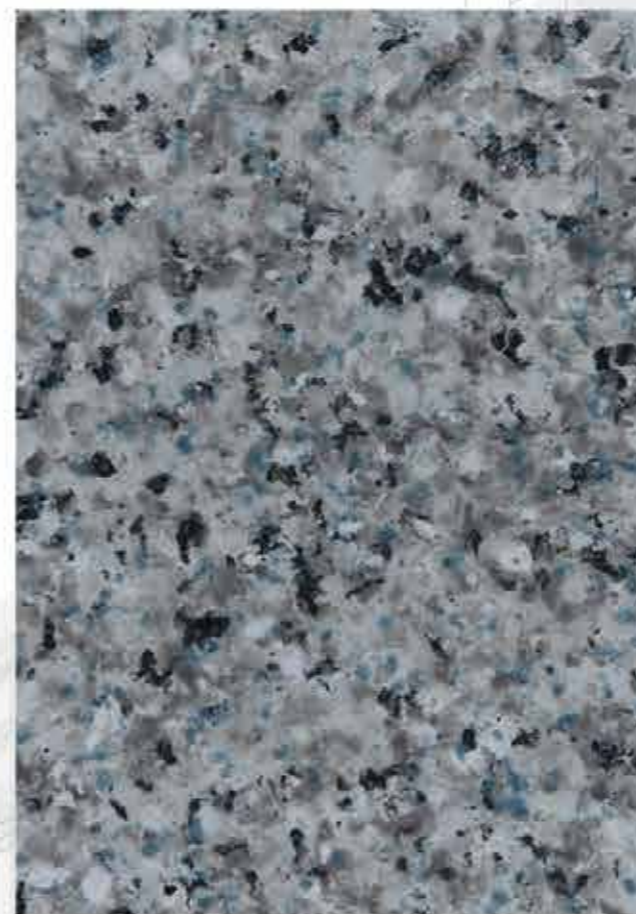
SGM-G-116



SGM-G-109



SGM-G-110



SGM-G-117



SGM-G-118



SGM-G-111



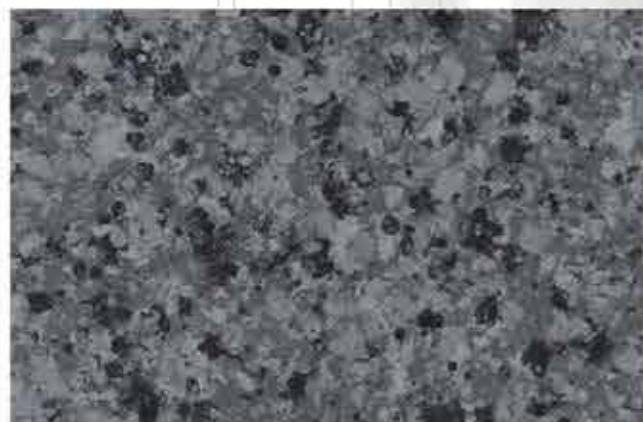
SGM-G-112



SGM-G-119



SGM-G-120



SGM-G-122



SGM-G-124



SGM-G-121



SGM-G-123



SGM-G-125



SGM-G-126



SGM-G-127



SGM-G-128



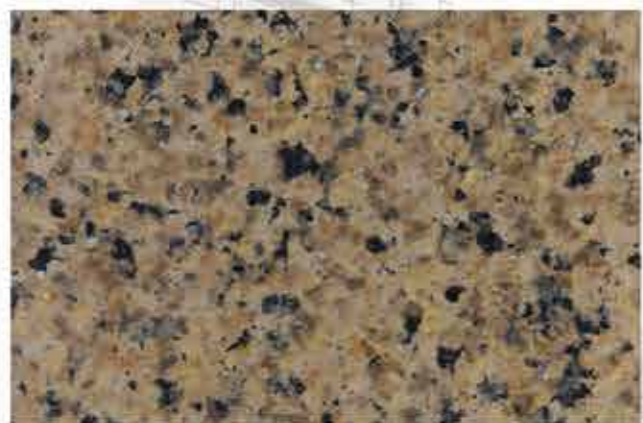
SGM-G-129



SGM-G-130



SGM-G-131



SGM-G-132



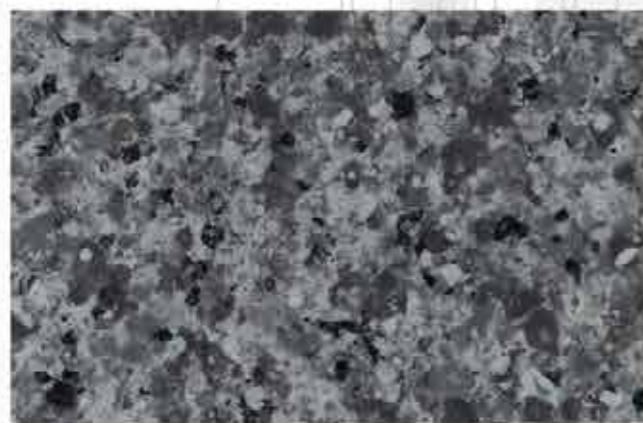
SGM-G-133



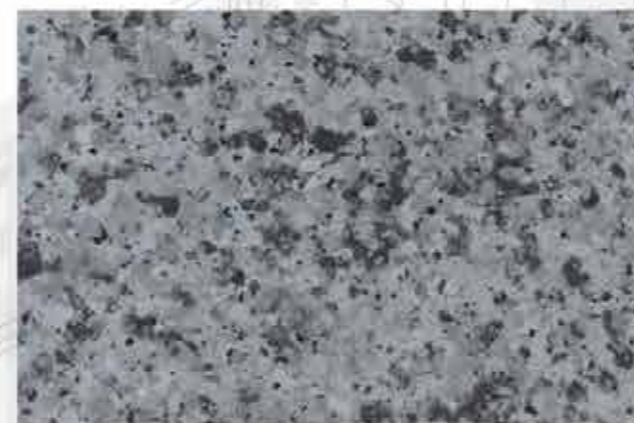
SGM-G-134



SGM-G-136



SGM-G-135



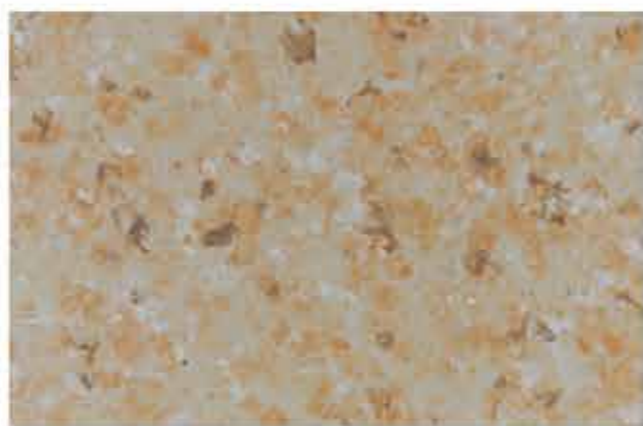
SGM-G-137



SGM-G-138



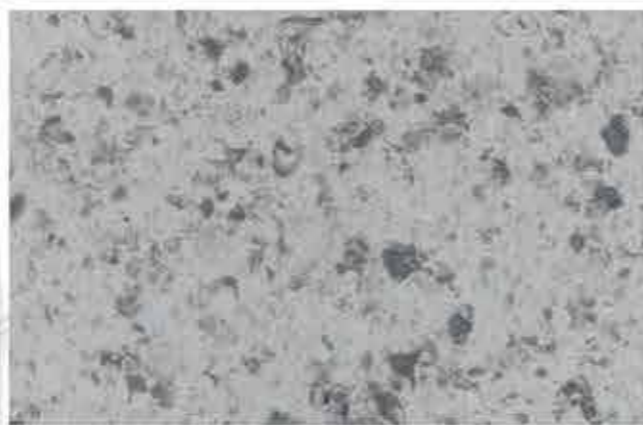
SGM-G-139



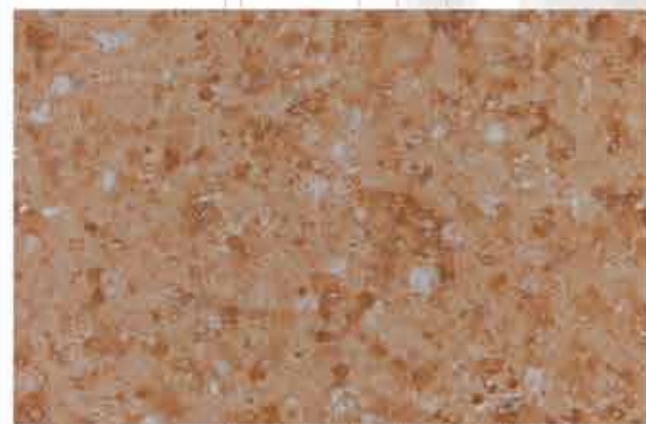
SGM-G-140



SGM-G-141



SGM-G-142



SGM-G-143



SGM-G-144



SGM-G-145



SGM-G-146



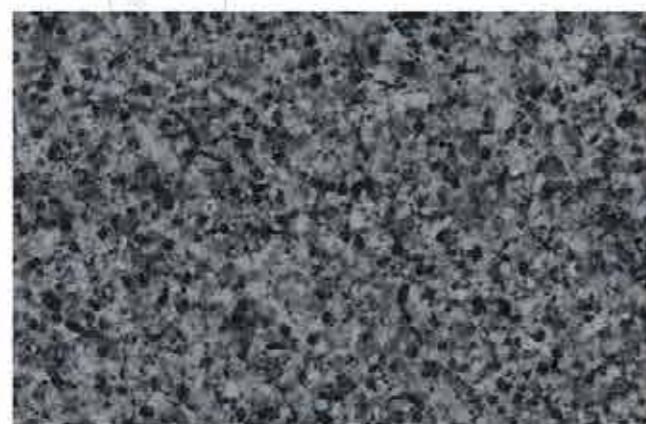
SGM-S-301



SGM-S-303



SGM-S-302



SGM-S-304



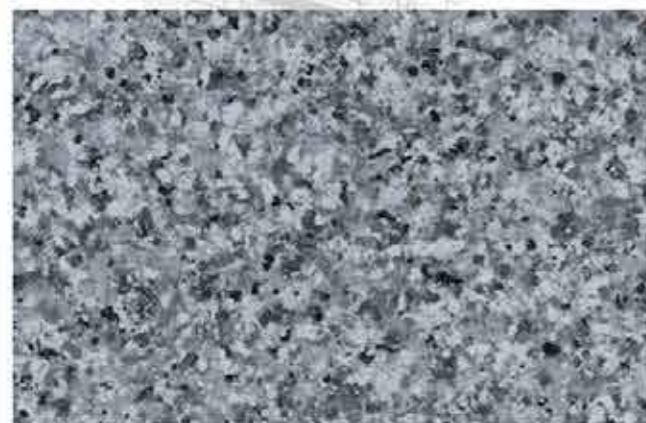
SGM-S-305



SGM-S-311



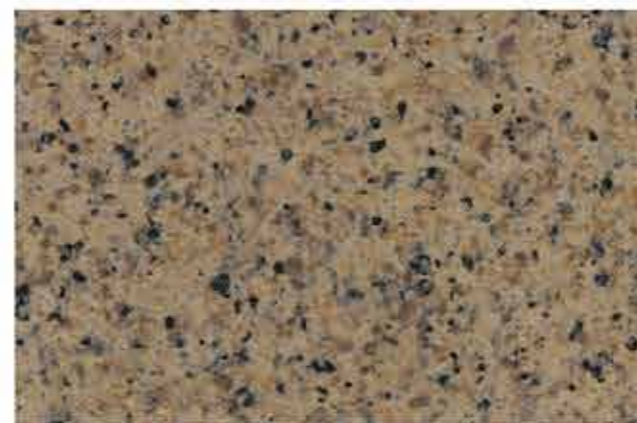
SGM-S-312



SGM-S-306



SGM-S-307



SGM-S-313



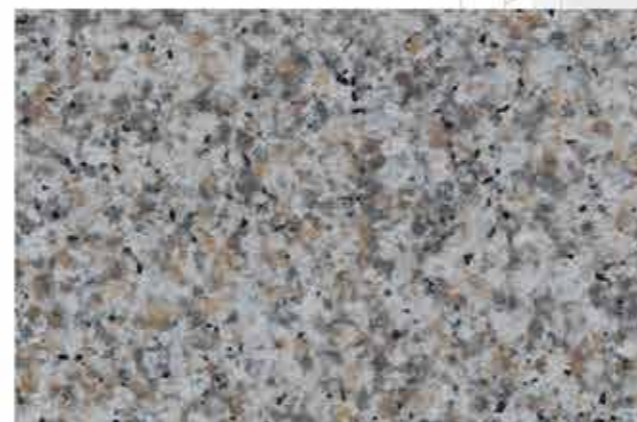
SGM-S-314



SGM-S-308



SGM-G-310



SGM-S-315



SGM-S-316



SGM-S-309



SGM-S-317



SGM-S-318